



Supplier | Wholesaler | Distributor | Manufacturer

Product Catalogue

"EMBRACE NATURE WITH ARECA: SUSTAINABLE, STYLISH, AND ECO-FRIENDLY."

WWW.ARBHUENTERPRISES.COM



Bio Cups

Biocups are eco-friendly, compostable alternatives to traditional plastic or paper cups. Made from renewable resources like plant-based materials or biodegradable bioplastics, they are designed to break down naturally without harming the environment. Biocups are often used for serving hot and cold beverages and provide a sustainable option for businesses and individuals looking to reduce their environmental impact. These cups decompose into organic matter, making them an excellent choice for eco-conscious events, cafes, and daily use.



ECO-FRIENDLY



SUSTAINABLE



CHEMICAL FREE



DURABLE & STURDY



PLA COATED



Elevate Your Environment

“Promoting Sustainability”

At our company, sustainability is at the heart of everything we do. We are dedicated to environmental stewardship and the well-being of local communities through the responsible sourcing of birchwood. Our approach includes key initiatives that ensure we produce eco-friendly cutlery without harming the environment, while also enhancing the livelihoods of local workers.

Local Sourcing: We source our birchwood directly from responsibly managed forests, ensuring that the materials used in our manufacturing process are sustainably harvested. By partnering with local suppliers, we reduce the carbon footprint associated with transportation and contribute to the local economy.

Environmental Preservation: The birchwood we use is harvested using sustainable practices that maintain the health and diversity of the forest ecosystem. Our commitment to responsible sourcing helps prevent deforestation, promotes biodiversity, and ensures that no harm is done to the environment during production.

Empowering Farmers: Our collaboration with local workers and suppliers provides them with a reliable source of income, helping to improve their quality of life. This partnership not only supports their financial stability but also encourages sustainable forestry practices, fostering long-term environmental and economic health.

Waste Reduction: Any waste generated during the manufacturing process is either recycled or composted, contributing to a zero-waste production cycle. This commitment to waste reduction further underscores our dedication to environmental sustainability. By choosing our birchwood cutlery, you're supporting a company that prioritizes the planet and people, making a positive impact on both the environment and local communities.

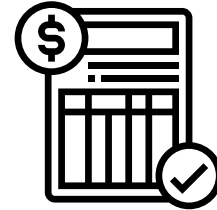


Our Process.



Get Samples

See our products before you place the order. The Shipping charges are redeemable in your original order.



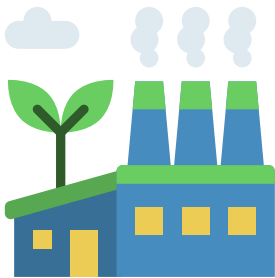
Get Your Quote

Our Team will gather your requirements and ensure to give you the most appropriate quote for the products



Additional Assistance

Get a valued added Meeting with us for Marketing & Demanding Insights and for requirements regarding your B2B store



Overseeing Manufacturing

Come for a virtual Factory Visit with us to oversee our Manufacturing Process.



Quality Inspection

Come for a video call with us to ensure the quality before packing



Shipping & Tracking

Get Automated Tracking Updates about your Shipment

Product Portfolio





Flat Cups

Available Sizes



- ▶ **80ML**
- ▶ **105ML**
- ▶ **110ML**
- ▶ **140ML**
- ▶ **150ML**
- ▶ **200ML**
- ▶ **240ML**
- ▶ **300ML**
- ▶ **330ML**

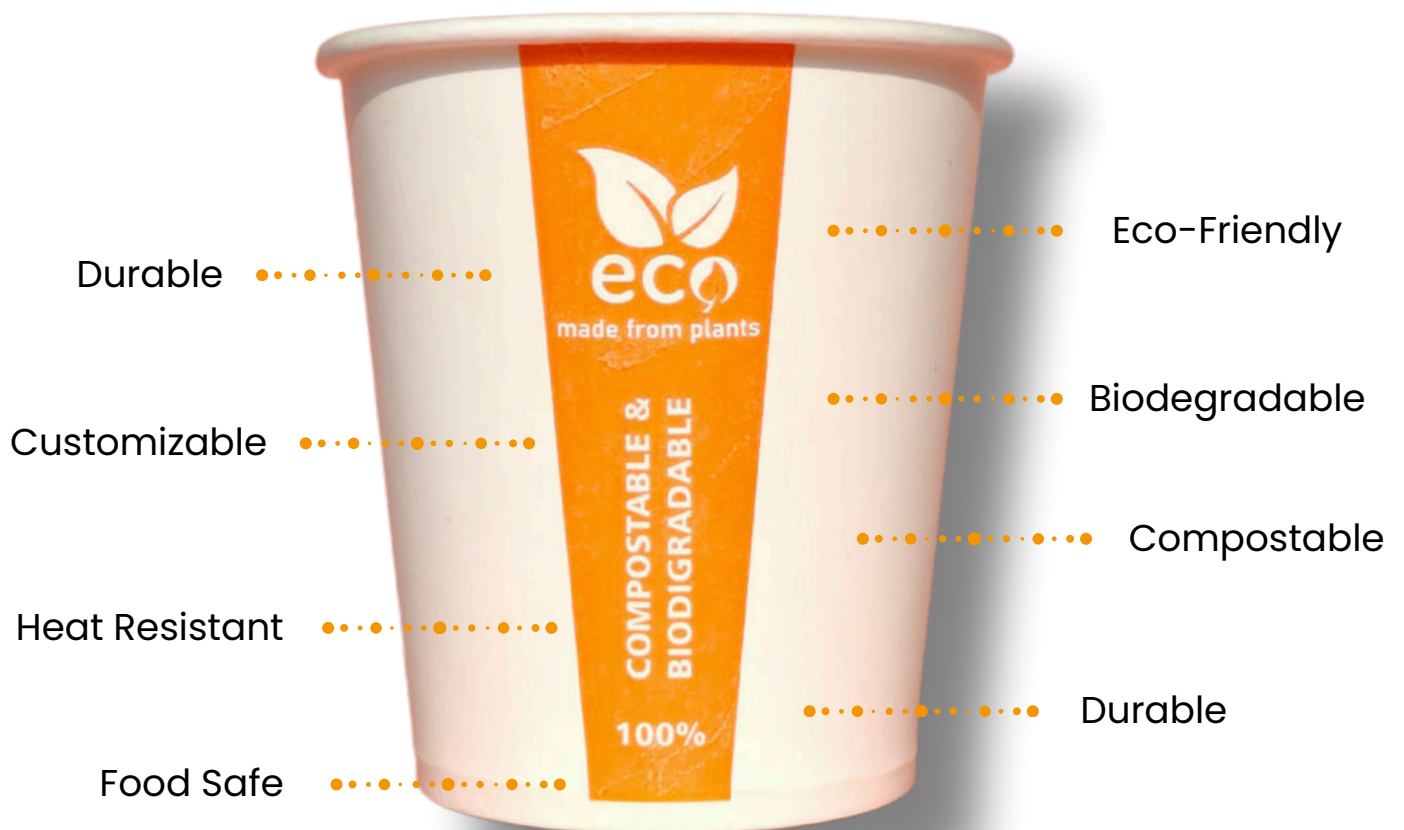


Slim & Tall Cups



Available Sizes

- ▶ **90ML**
- ▶ **110ML**
- ▶ **150ML**
- ▶ **210ML**
- ▶ **250ML**
- ▶ **300ML**
- ▶ **350ML**



The background of the image shows several stacks of disposable coffee cups. On the left, there are stacks of cups with red and white diagonal stripes. On the right, there are stacks of plain brown paper cups. The cups are stacked high, creating a sense of volume and waste. The text is overlaid on this background.

THANK YOU!

YOU ARE SAVING THE PLANET

AROUND 32% OF GLOBAL MUNICIPAL
SOLID WASTE IS NON-BIODEGRADABLE.
THIS INCLUDES ITEMS LIKE PLASTICS AND
INSULATION, WHICH ARE NOT BROKEN
DOWN BY THE NATURAL PROCESSES OF
DECAY.

Our Customer Brands



Supplier | Wholesaler | Distributor | Manufacturer



Compliant and reliable exporter from India
Known for quality in our products

SJR Koramangala, Plot 36, 1st floor Sony World
Signal, 100 Feet Rd, Koramangala, Bengaluru,
Karnataka 560095

Contact - +91 9940805789, +91 9353636052

sales@arbhuenterprises.com